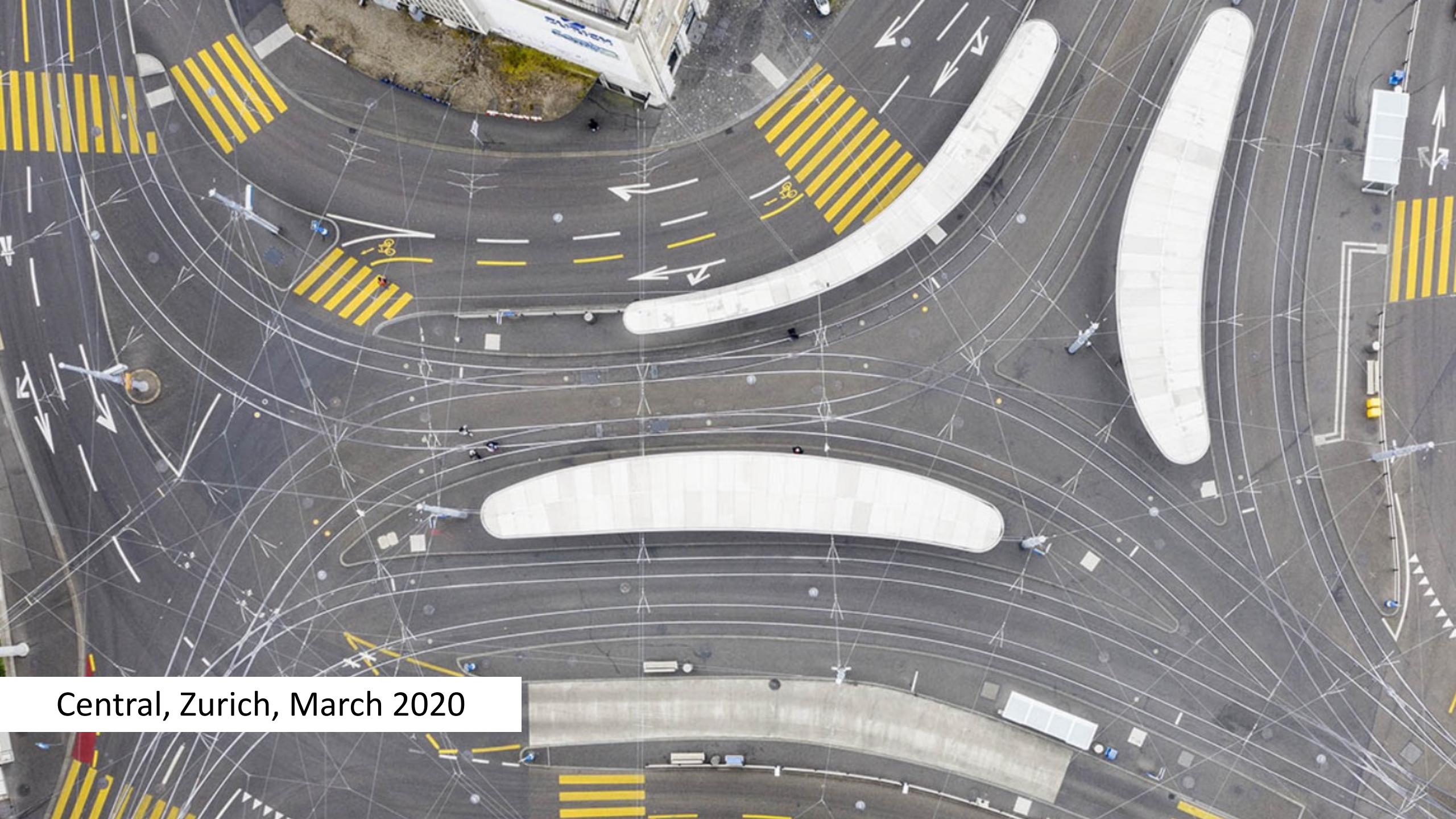




Capacity building to bridge population based and clinical (studies)

SSPH+ Faculty Meeting 15.06.2022

Milo Puhan & Jan Fehr
Epidemiologie, Biostatistik und Prävention - Universität Zürich



Central, Zurich, March 2020

Time to finally think about cardinal questions re capacity building – pandemic as accelerator

...from the Oslerian model of bench to bedside to a model of discovery to care continuum: bench to bedside to population....

to society, in which we move beyond health care to health and wellbeing of people and society...

Victor J Dzau, Celynn A Balatbat, William F Ellaiissi

Lancet 2021; 398: 2300-04



Victor Dzau, @ www.outcome4medicine.ch

Let's get out of the silo trap



Understand different needs and contexts

- Population: Health (care) needs across the life span to enable fulfilling life
- Clinical: Kindness in care and integrated care
- Research: Continuum in research is the correspondent to integrated care

Cardinal questions re capacity building

- Who to involve?
 - Personal level/career
 - Institutional level
- How to involve?
- How to make it happen?
- How to make it sustainable?

Back to the call of the Academy of Medicine – an opportunity for SSPH+

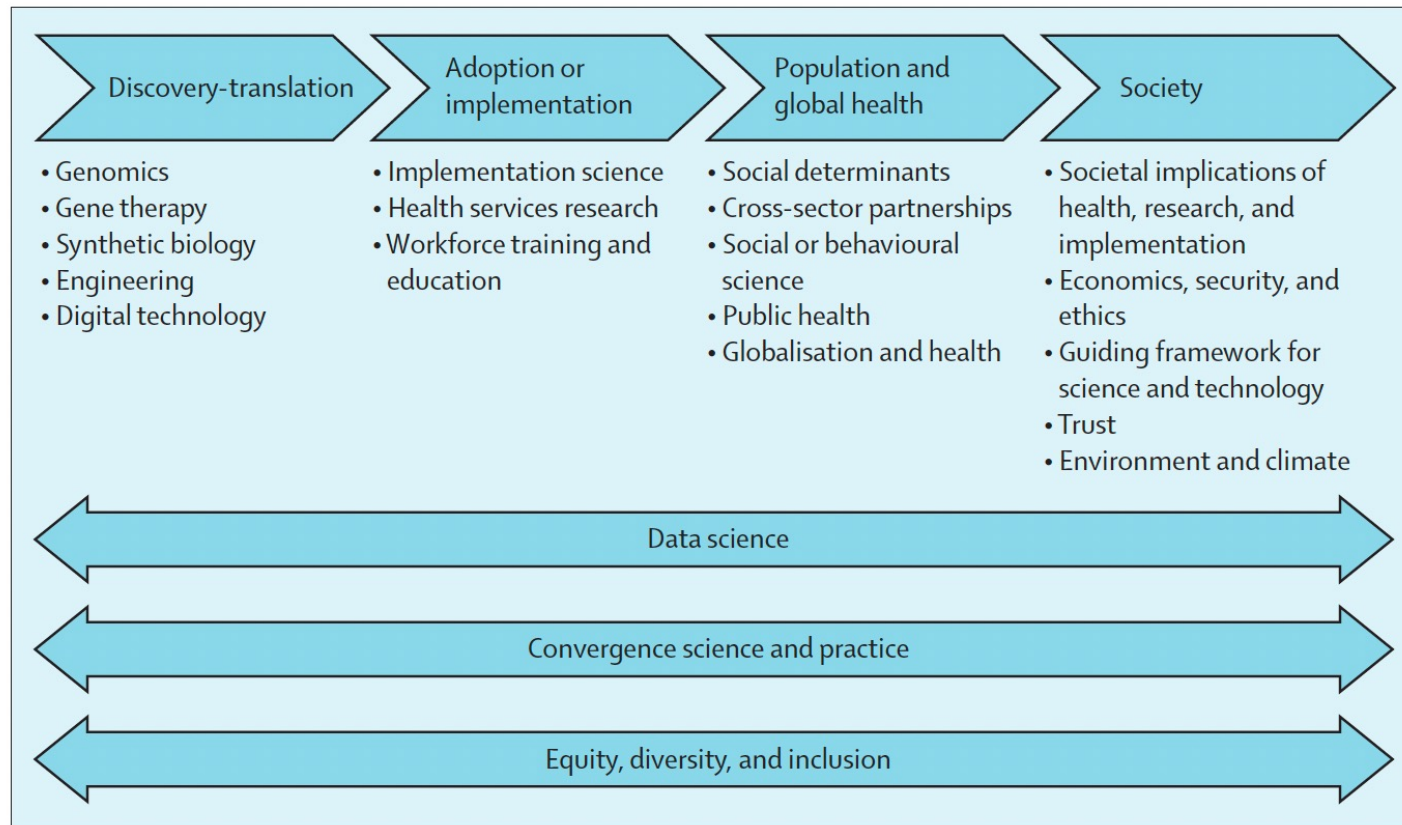


Figure: Discovery to health to population to society framework



Victor J Dzau, Celynne A Balatbat, William F Ellaissi

Lancet 2021; 398: 2300-04

New models – Multifaceted platforms

- Interdisciplinary, interfaculty UZH Population Research Center
- Population-based studies as the backbone and to bridge gaps between population-based and other health and social science studies
- Enable cross-fertilization and translational path from innovation to policy and practice

| | | EBPI (Fehr, Puhan) | CMR (Friemel) | Kispi (Jenni, Latal) | Neuro (Baumann) | Dev Psych (Shanahan) | Clin Psych (Watzke) | Pol Sc (Donnay) | IfIS (von Wyl) |
|-----------------------------|---|------------------------------|-------------------------|--------------------------------|---------------------------|--------------------------------|-------------------------------|---------------------------|--------------------------|
| Database manager | Unified approaches to data collection and research IT environment (products 2 & 3) | Infrastructure | Infrastructure | Infrastructure | Infrastructure | Infrastructure | Infrastructure | Infrastructure | Infrastructure |
| | | Personnel | Personnel | Personnel | Personnel | Personnel | Personnel | Personnel | Personnel |
| Research coordinator | Sharing of infrastructure, personnel and material (product 4) | Material Lab | Material Lab | Material Lab | Material Lab | Material Lab | Material Lab | Material Lab | Material Lab |
| Scientific manager | Recognizing and assessing opportunities (product 1) | Study 1 | Study 1 | Study 1 | Study 1 | Study 1 | Study 1 | Study 1 | Study 1 |
| | | Study 2 | Study 2 | Study 2 | Study 2 | Study 2 | Study 2 | Study 2 | Study 2 |
| | | Study 3 | Study 3 | Study 3 | Study 3 | Study 3 | Study 3 | Study 3 | Study 3 |
| | | ... | ... | ... | ... | ... | ... | ... | ... |
| | Communication & fundraising support (product 5) | | | | | | | | |

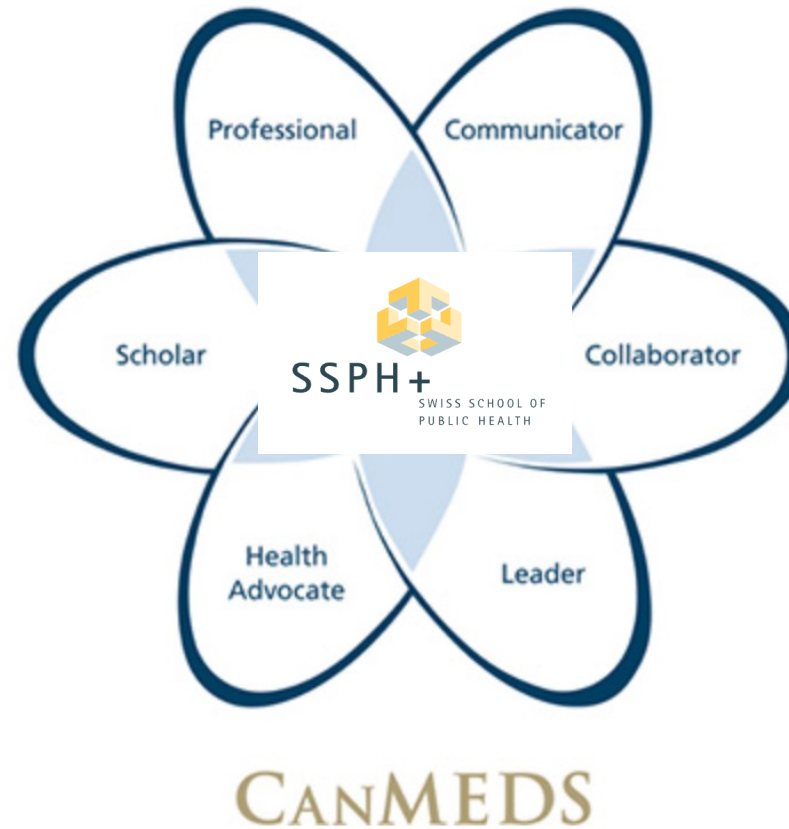
Cardinal questions re capacity building

- Who to involve?
 - **Personal level/career**
 - Institutional level
- How to involve?
- How to make it happen?
- **How to make it sustainable?**

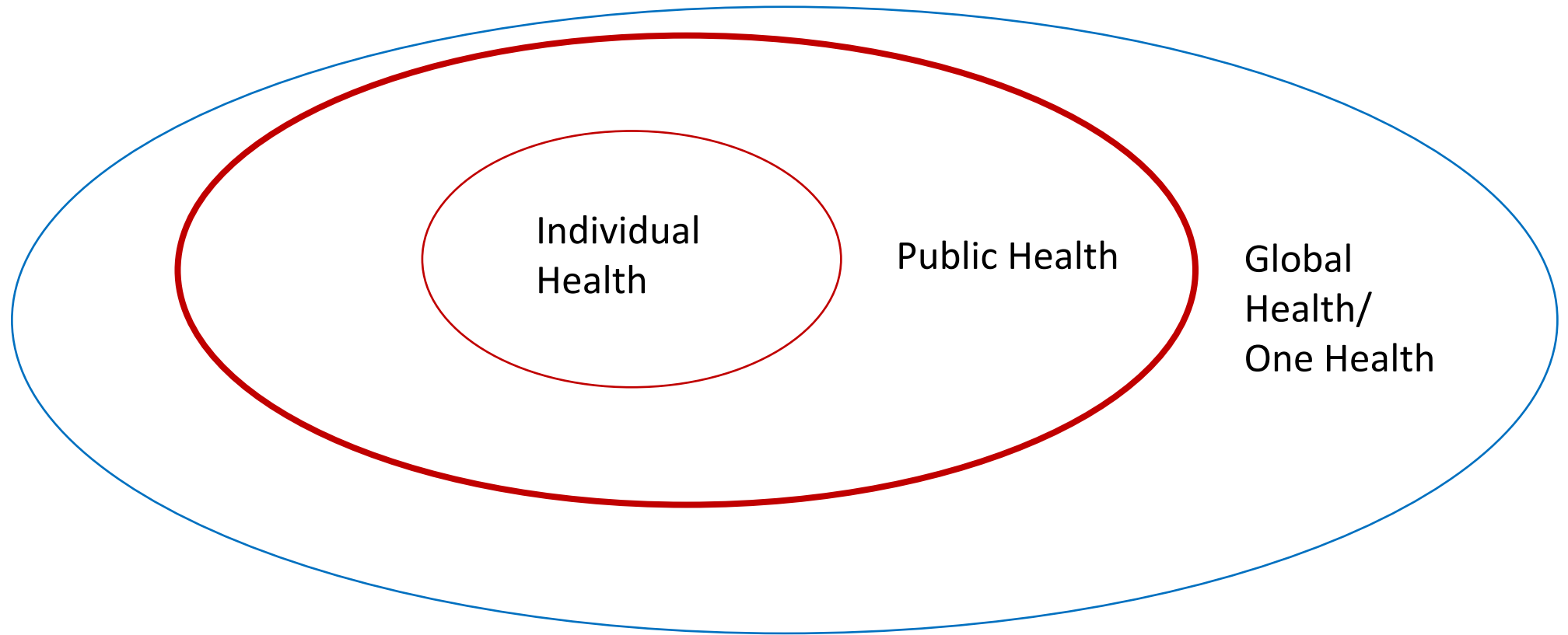
Cardinal questions re capacity building – ‚players‘



Schweizerische Eidgenossenschaft
Confédération suisse
Confederazione Svizzera
Confederaziun svizra



The beauty of intersections





Welcome

RESEARCH – CLINICAL CARE – EDUCATION

[More about us.](#)



...and we all act in
the context of the
society and
community

Thanks for your
attention and all
contributions!

