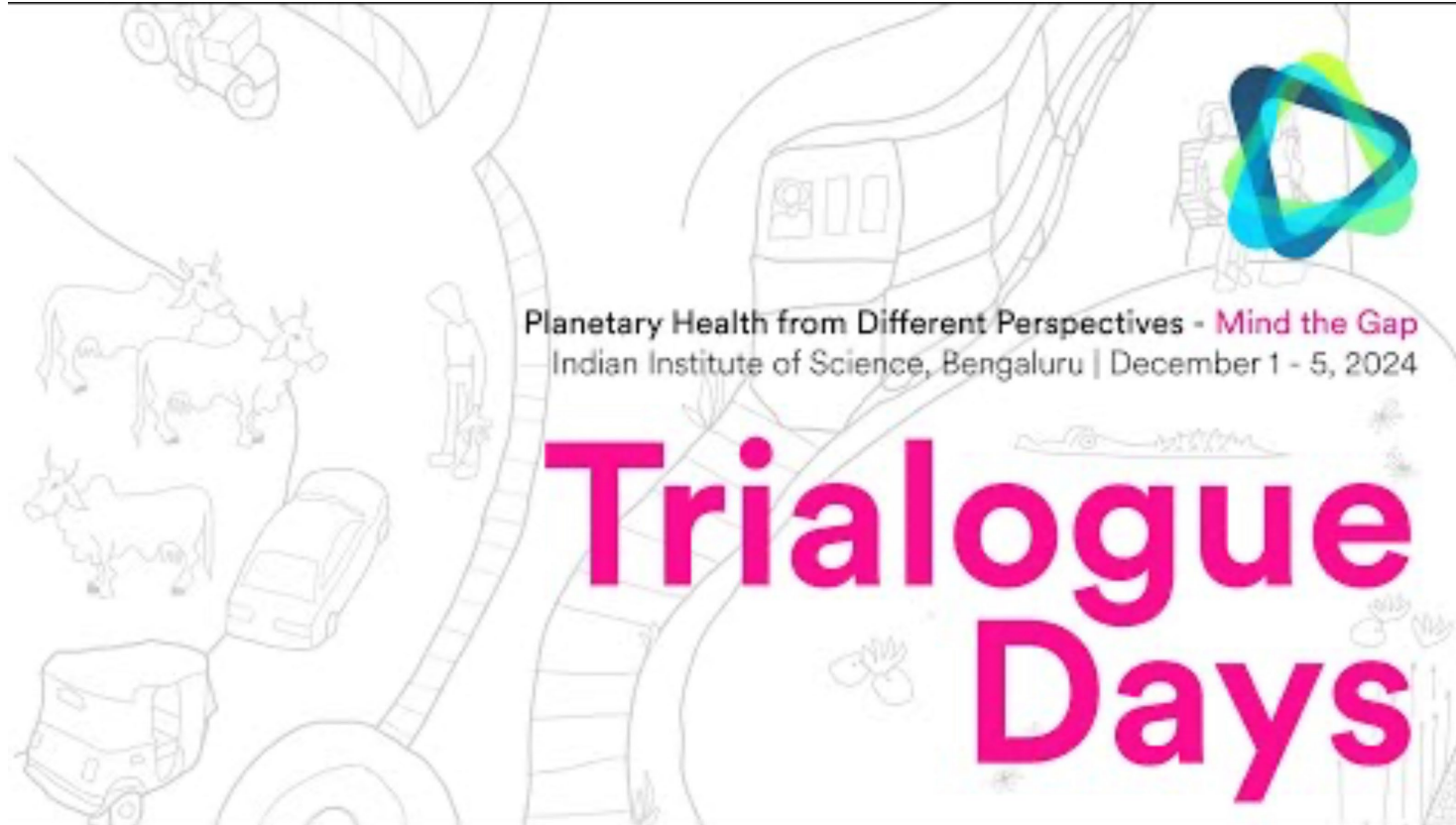




SSPH+

SWISS SCHOOL OF
PUBLIC HEALTH

A FOUNDATION OF SWISS UNIVERSITIES



[Planetary health play list on spotify](#)
Brought to you by the Trailoguers
December 2024

Planetary Health Rap by Jon Chase (also on Spotify):
<https://www.youtube.com/watch?v=NUI6NYeBCzM>



Planetary Health in the context of Public Health

Plenary Session 5th June 2026 10.30 -11.15h

Suzanne Suggs – Social Marketing / Communication

Simon Rüegg – Veterinarian Med / One Health

Jan Fehr – Human Med / Global Health



Next 45 min... - let's get the dialogue started

- What are we talking about?
 - Your survey-answers
- Experiences from the 'Tipping Point Game'
 - Next generation first
- How to address?
 - Your survey-answers + discussion

1) What are we talking about?



SSPH+

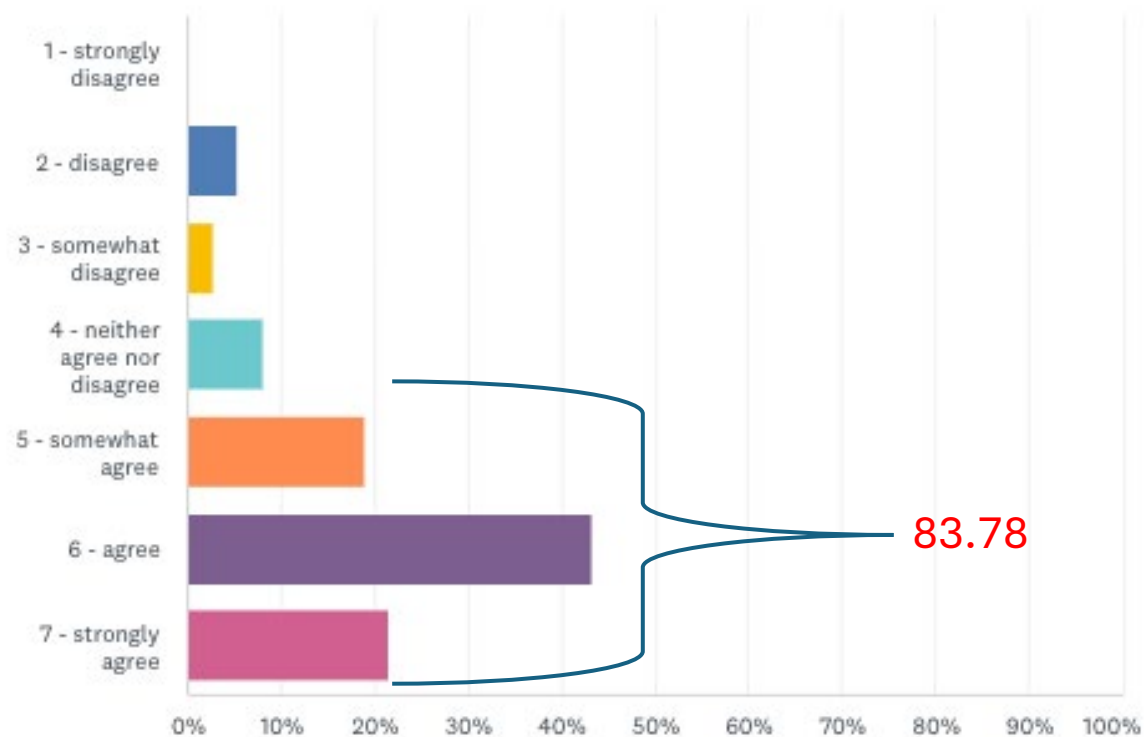
SWISS SCHOOL OF
PUBLIC HEALTH

A FOUNDATION OF SWISS UNIVERSITIES

Planetary Health – does it matter to me?

Planetary health is something that is very important to me.

Answered: 37 Skipped: 1





Last November riding Furkapass with my bike...

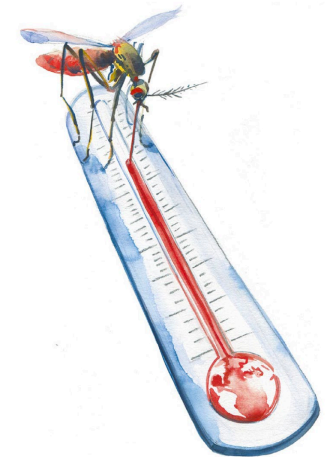
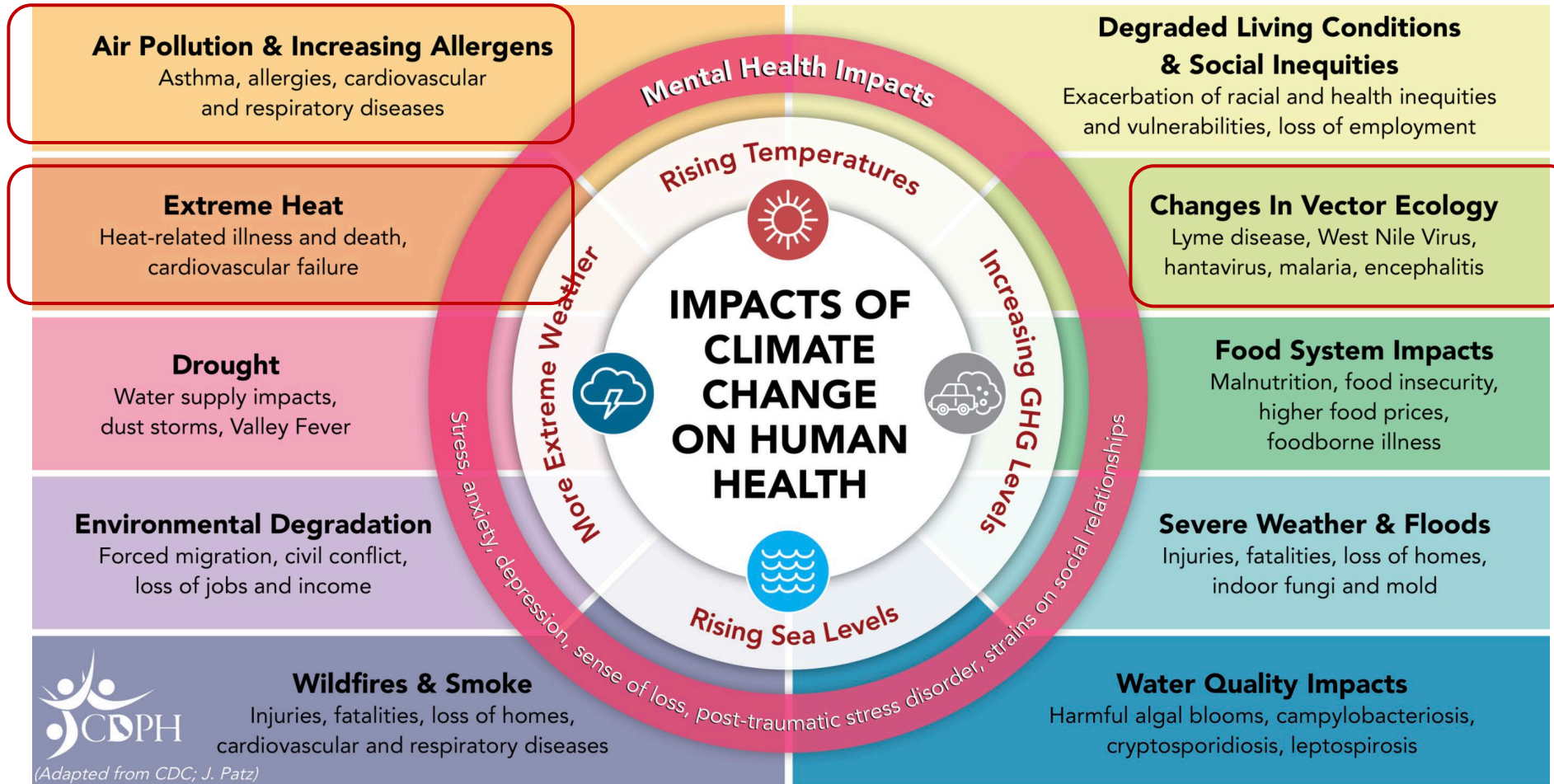


1983



2024

Climate Change a key aspect of Planetary Health



(Adapted from CDC; J. Patz)



SSPH+

SWISS SCHOOL OF
PUBLIC HEALTH

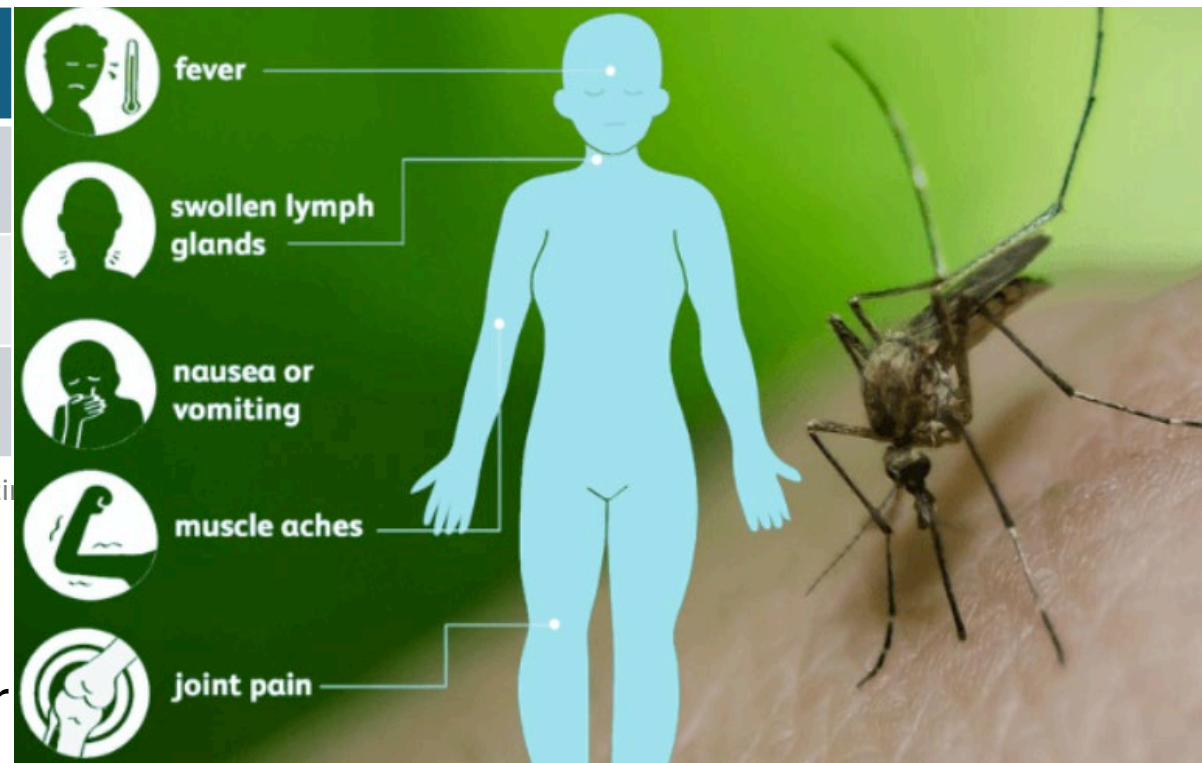
A FOUNDATION OF SWISS UNIVERSITIES

Tropical Diseases have arrived in Europe

	2018	2019	2020
Human		5	22
Horse	2	36	22
Birds	12	76	63

Patzi

Germany became a new endemic area for West-Nile Fever in 2018



Cave: Meningo-encephalitis

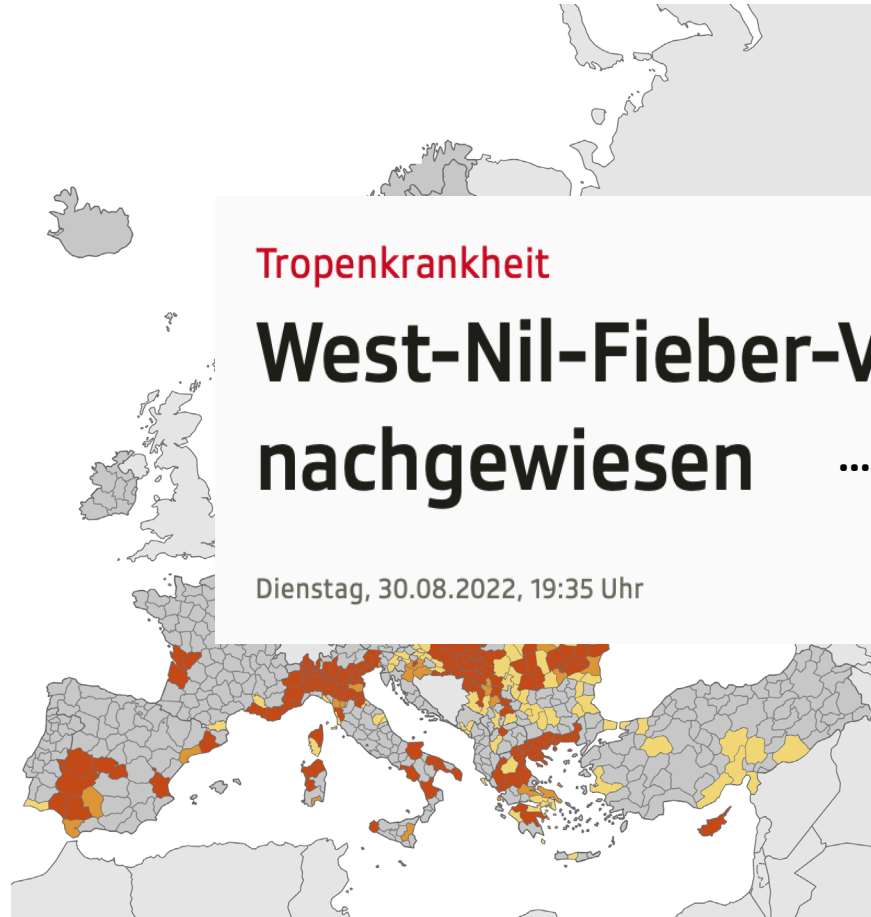


**Distribution of human West Nile virus infections
in NUTS 3 or GAUL 1 regions of the EU/EEA
and neighbouring countries
during 2013–2023, as of 4th January 2024**

- Human infections reported, 2023
- Human infections reported, 2022
- Human infections reported, 2013–2021
- No infections reported
- Not included

Countries not visible
in the main map extent

- Malta
- Liechtenstein



Tropenkrankheit

West-Nil-Fieber-Virus erstmals im Tessin nachgewiesen ... in mosquitos

Dienstag, 30.08.2022, 19:35 Uhr



What is Planetary Health ?

1. What is planetary health? Which answer fits best?

- 2.7% ☐ It's basically just a more modern term for 'One Health.'
- 13.51% ☐ An expansion of public health that emphasizes environmental protection.
- 0% ☐ A call to protect ecosystems for their own sake -- even if human health is not the primary goal.
- 81.08% ☐ A paradigm shift that sees humans as part of nature, not separate from it -- implying new values, not just new policies.
- 2.7% ☐ I know it is somehow linked to climate change but it's hard to define.

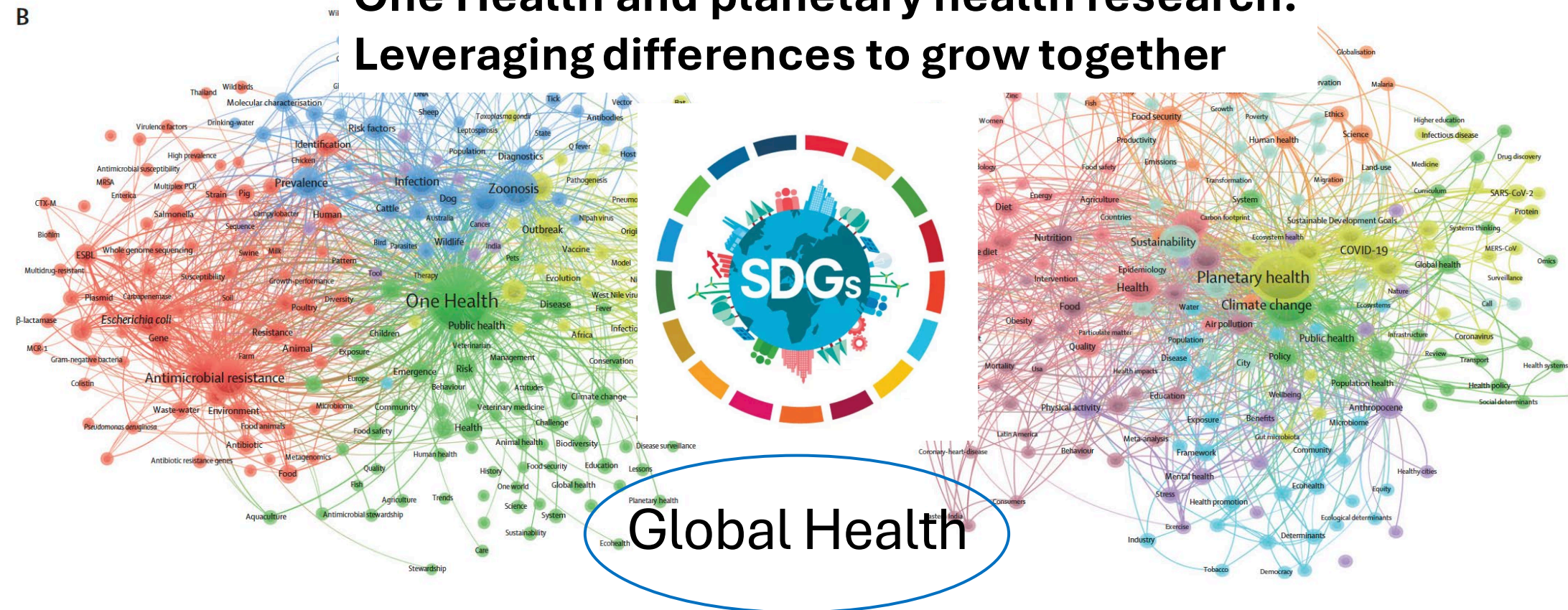


SWISS SCHOOL OF
PUBLIC HEALTH

A FOUNDATION OF SWISS UNIVERSITIES

B

One Health and planetary health research: Leveraging differences to grow together



SSPH+ Annual Meeting 2025

De Castaneda et al The Lancet Planetary Health; Vol 7; 2023



SSPH+

SWISS SCHOOL OF
PUBLIC HEALTH

A FOUNDATION OF SWISS UNIVERSITIES

Hold on ... what about One & Global Health?

B

Paul Crutzen (1933-2021)



Nobel Prize in Chemistry 1995

Global warming and environmental pollution are challenging issues of justice because the poor and future generations are the ones most affected.

Global Health

De Castaneda et al The Lancet Planetary Health; Vol 7; 2023

SSPH+ Annual Meeting 2025

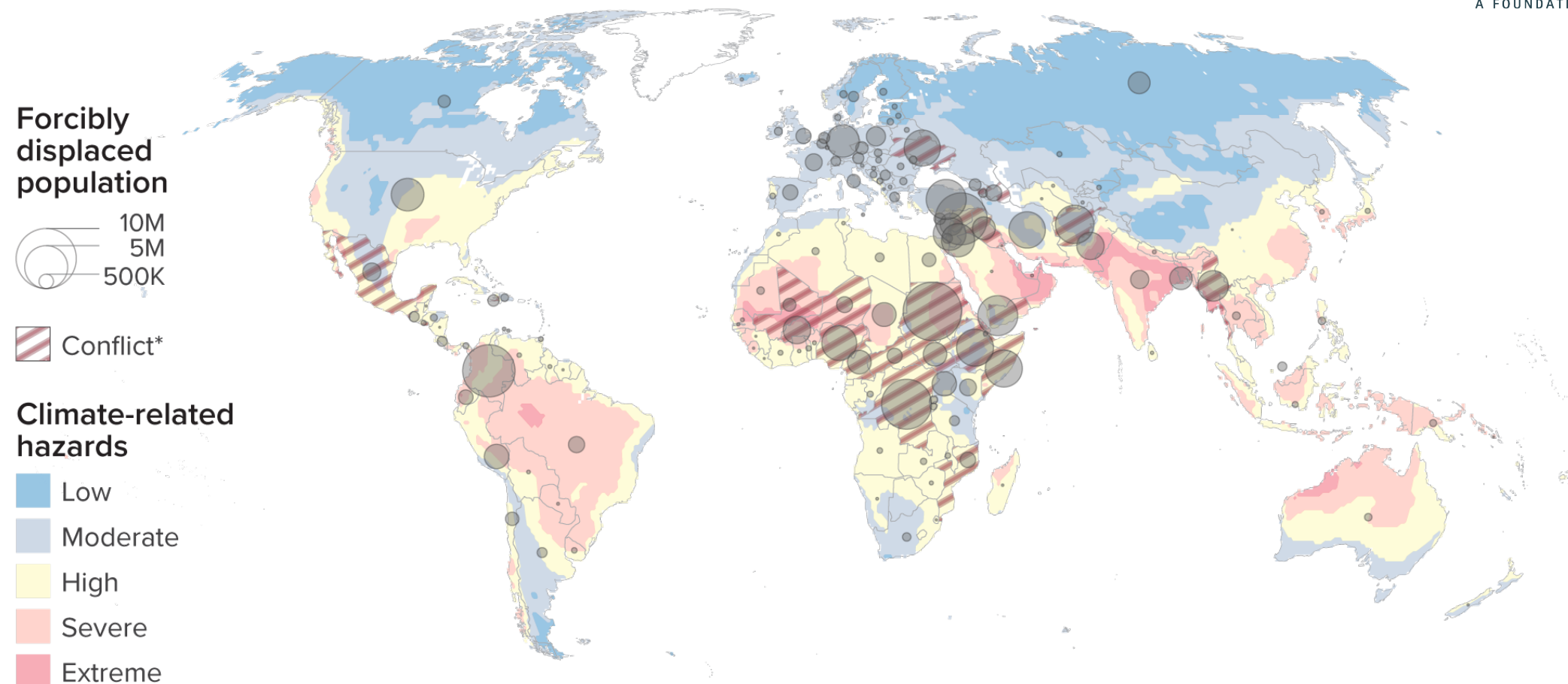


SSPH+

SWISS SCHOOL OF
PUBLIC HEALTH

A FOUNDATION OF SWISS UNIVERSITIES

Climate change – displacement ,push-factor‘



*Countries with more than one conflict-related death per 100,000.

UNHCR

Interesting read:

“This Is Not Idealism—It’s Realism”: Ilona Kickbusch on Global, One and Planetary Health

An interview with Ilona Kickbusch



<https://onesec-magazine.org/public-health/this-is-not-idealism-its-realism-ilona-kickbusch-on-global-one-and-planetary-health/>

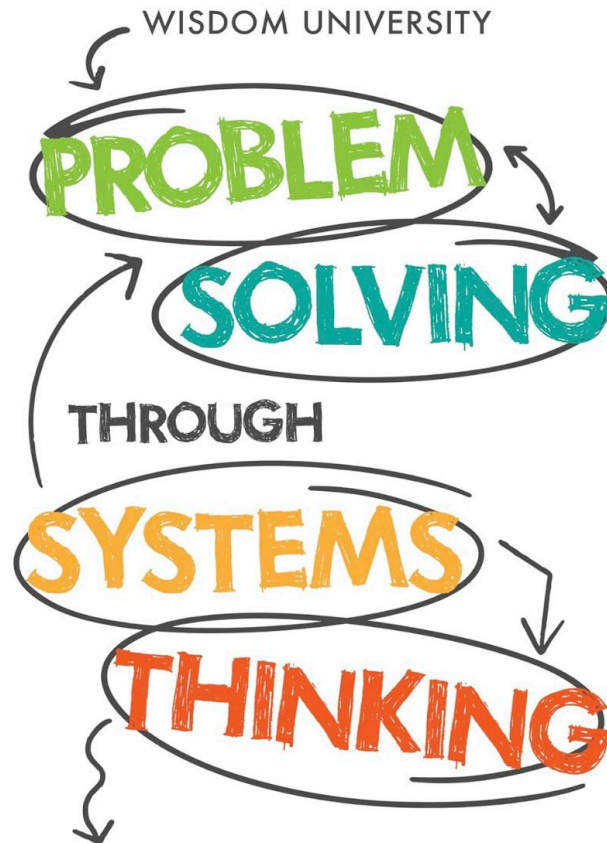


...what matters: what concepts share in common ...

SSPH+

SWISS SCHOOL OF
PUBLIC HEALTH

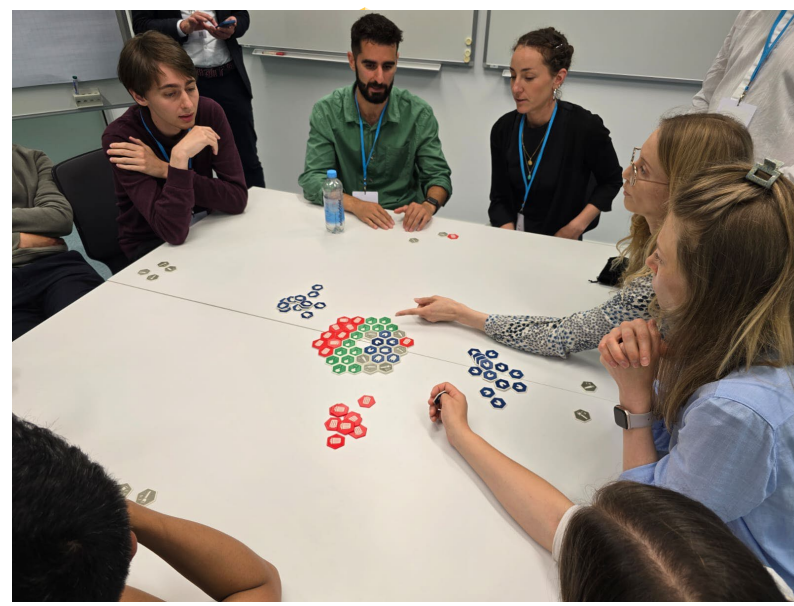
A FOUNDATION OF SWISS UNIVERSITIES



How To Apply **Systems Thinking** To Tackle Pressing Issues
And Unfold A Clear Solution In A Highly Interconnected World



2) Tipping point game- Experiences from the Next generation



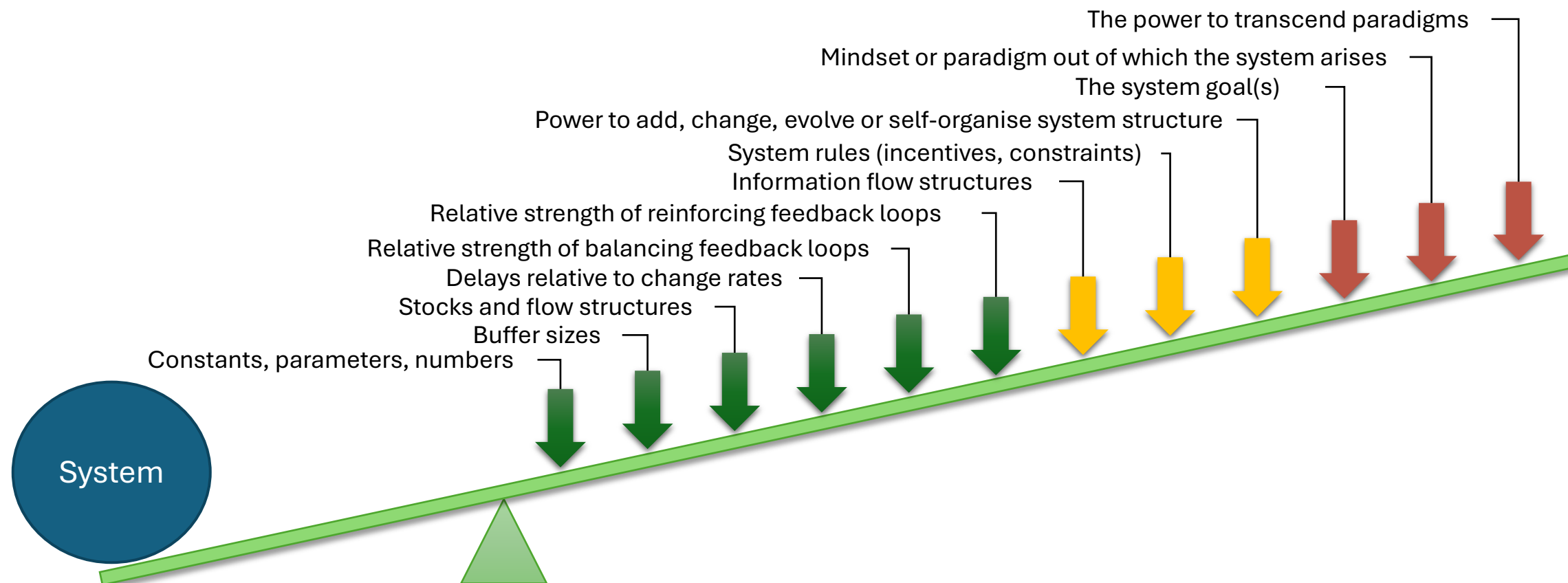


SSPH+

SWISS SCHOOL OF
PUBLIC HEALTH

A FOUNDATION OF SWISS UNIVERSITIES

Leverage points in Complex Adaptive Systems



Adapted from <https://csl4d.wordpress.com/2014/03/19/thinking-in-systems/>

SSPH+ Annual Meeting 2025



3) How to address Planetary Health ?

How do you relate...

3. How do you relate to planetary health? It sounds important – but how close is it really to your daily life, your decisions, or your professional focus? Are we engaging with it, or just nodding things along?

- 13.51% ☐ I support the idea, but I rarely act as if the planet's health truly depends on me.
- 67.57% ☐ It's woven into my thinking. I try to align my work and choices with planetary health principles.
- 5.41% ☐ I care more about immediate human needs. Planetary health feels too abstract or distant.
- 13.51% ☐ Honestly, I am still trying to figure out what that means for me in practice.



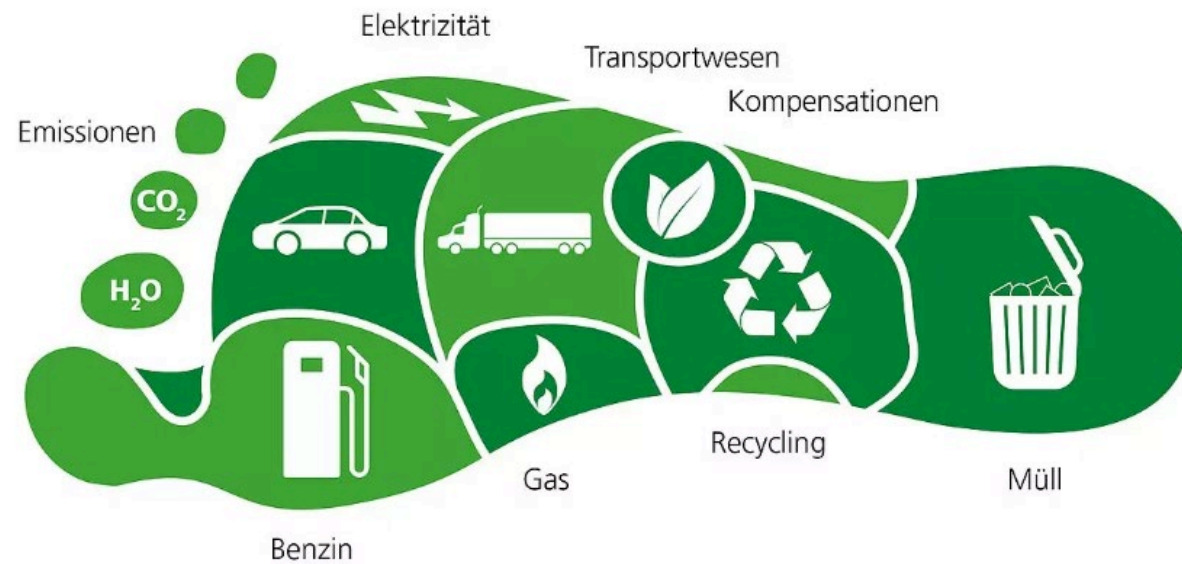
How can we address Planetary Health ?



SSPH+

SWISS SCHOOL OF
PUBLIC HEALTH

A FOUNDATION OF SWISS UNIVERSITIES





SSPH+

SWISS SCHOOL OF
PUBLIC HEALTH

A FOUNDATION OF SWISS UNIVERSITIES

How can we address Planetary Health ?



Greenhouse gas footprint
provoked by the health care
sector in Switzerland: **6.7 %**



Sustainable Economy
National Research Programme

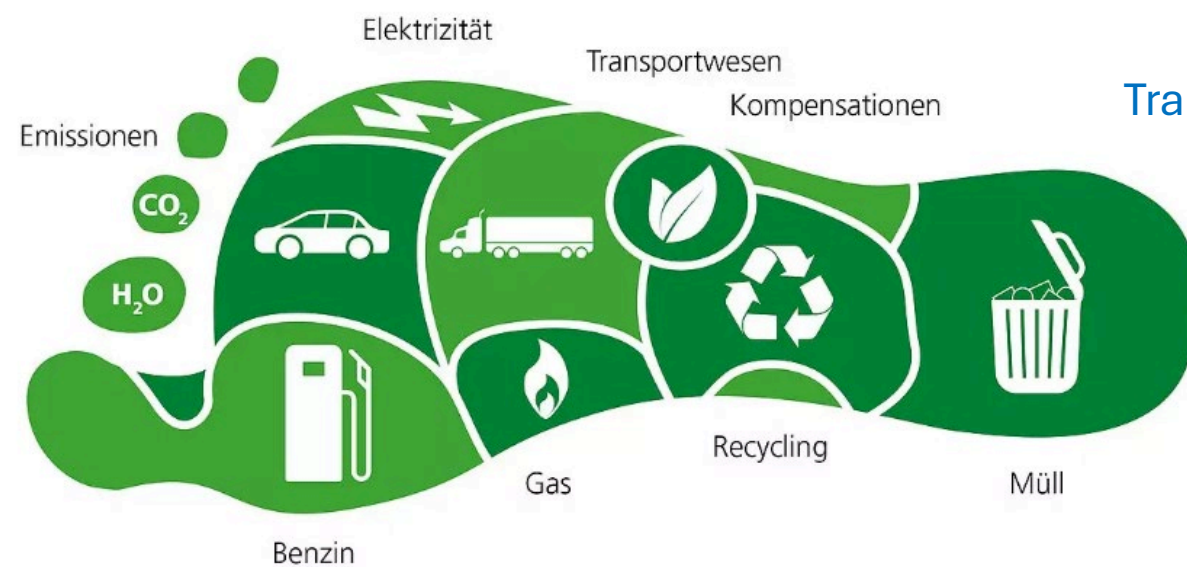


SSPH+

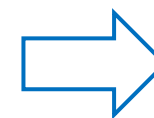
SWISS SCHOOL OF
PUBLIC HEALTH

A FOUNDATION OF SWISS UNIVERSITIES

How can we address Planetary Health ?



Transformative process





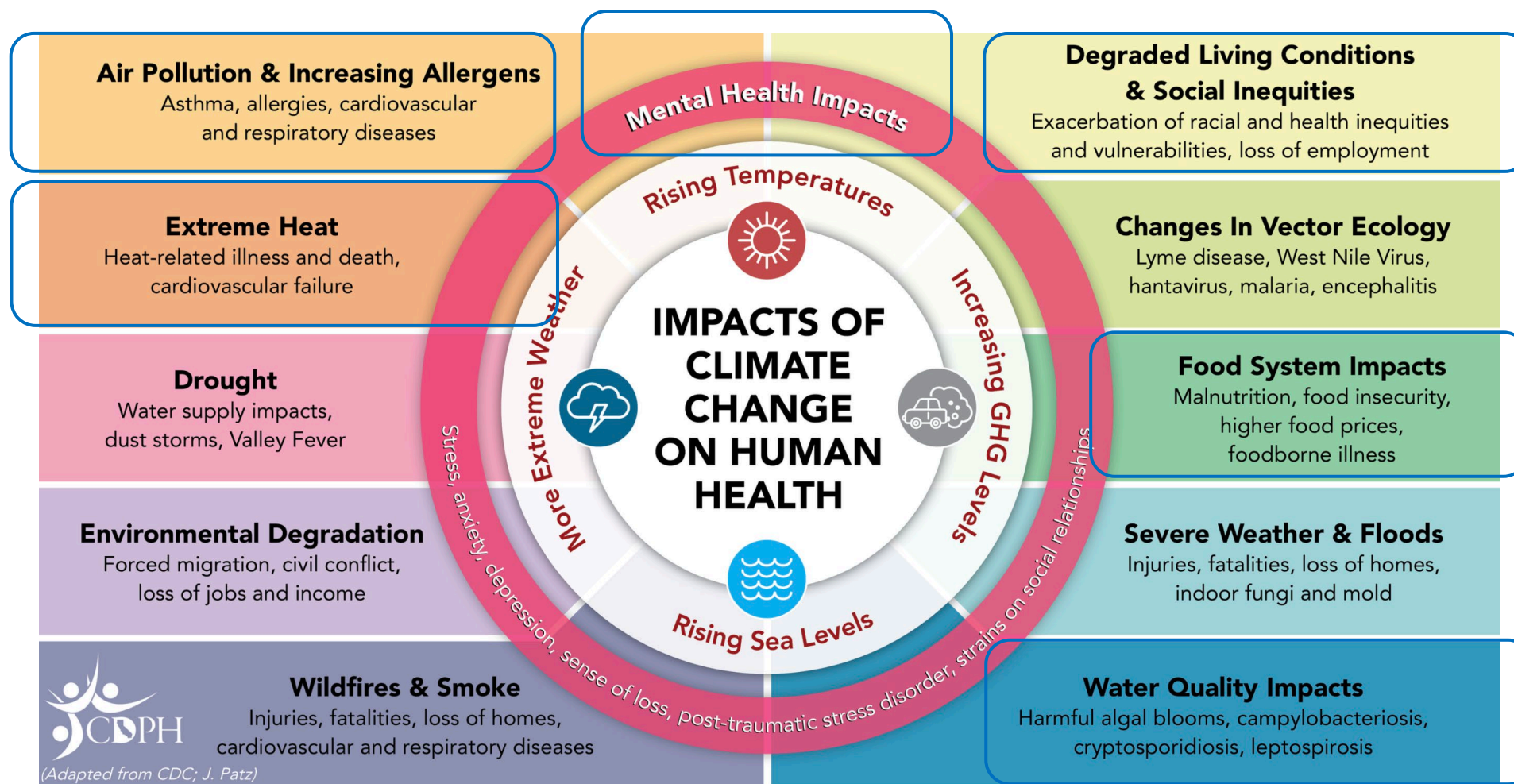
Public Health and Planetary Health

4. How well do public health and planetary health actually align in practice? Both claim to promote well-being – but do they really work together?

- 32.42% ☐ They overlap on paper, but in reality public health rarely considers ecological limits.
- 62.16% ☐ They are natural allies, but public health hasn't yet fully embraced the full scope of planetary concerns.
- 0% ☐ They are already well-integrated in many places.
- 5.41% ☐ They represent different paradigms: one focusses on humans, the other on ecological systems. Therefore it makes sense to keep it separate -- not to mix up things or create confusion.



... so many Public Health topics in here...





Next steps for SSPH+ ?

Values

Community of Will and Collaboration

What unifies and holds us together is the will and the goal to improve the health of the population based on science, evidence and communication. We feel part of a larger whole and are eagerly committed to public health, working together to address the challenges of the twenty-first century and to give public health a strong voice in Switzerland. We collaborate across universities and learn from each other.

Diversity, Transdisciplinarity, Respect, Responsibility

We value and promote diversity, inclusiveness, transdisciplinarity, and the collective in our education, research, and service. We maintain fair, respectful interactions and a positive work atmosphere both in collaborations and academic competitions. We communicate transparently and support each other.

Community, Scientific Exchange, Lifelong Learning

We form a community and at the same time a knowledge hub that offers its members added value in the form of scientific exchange in the academic network and lifelong learning in public health. In addition, we coordinate those issues for our network that affect everyone: education, scientific programs, communication, legal, lobbying, fundraising and more.



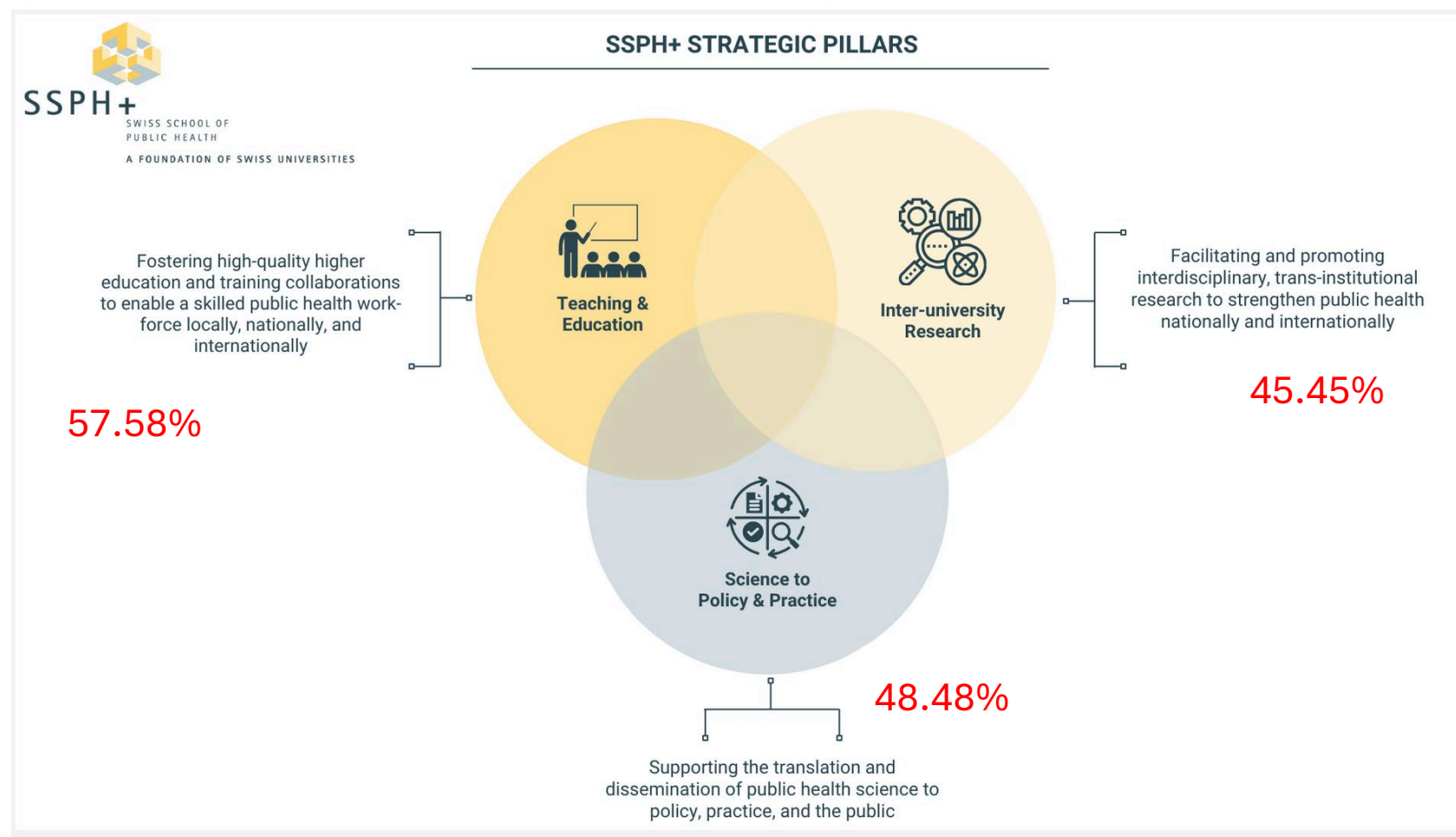
SSPH+

SWISS SCHOOL OF
PUBLIC HEALTH

A FOUNDATION OF SWISS UNIVERSITIES

Next steps for SSPH+ ?

What should be the next big step for advancing planetary health in public health? If we want to move beyond statements and symbolism, what's the smartest next move to actually make planetary health part of how we work, teach, and lead?





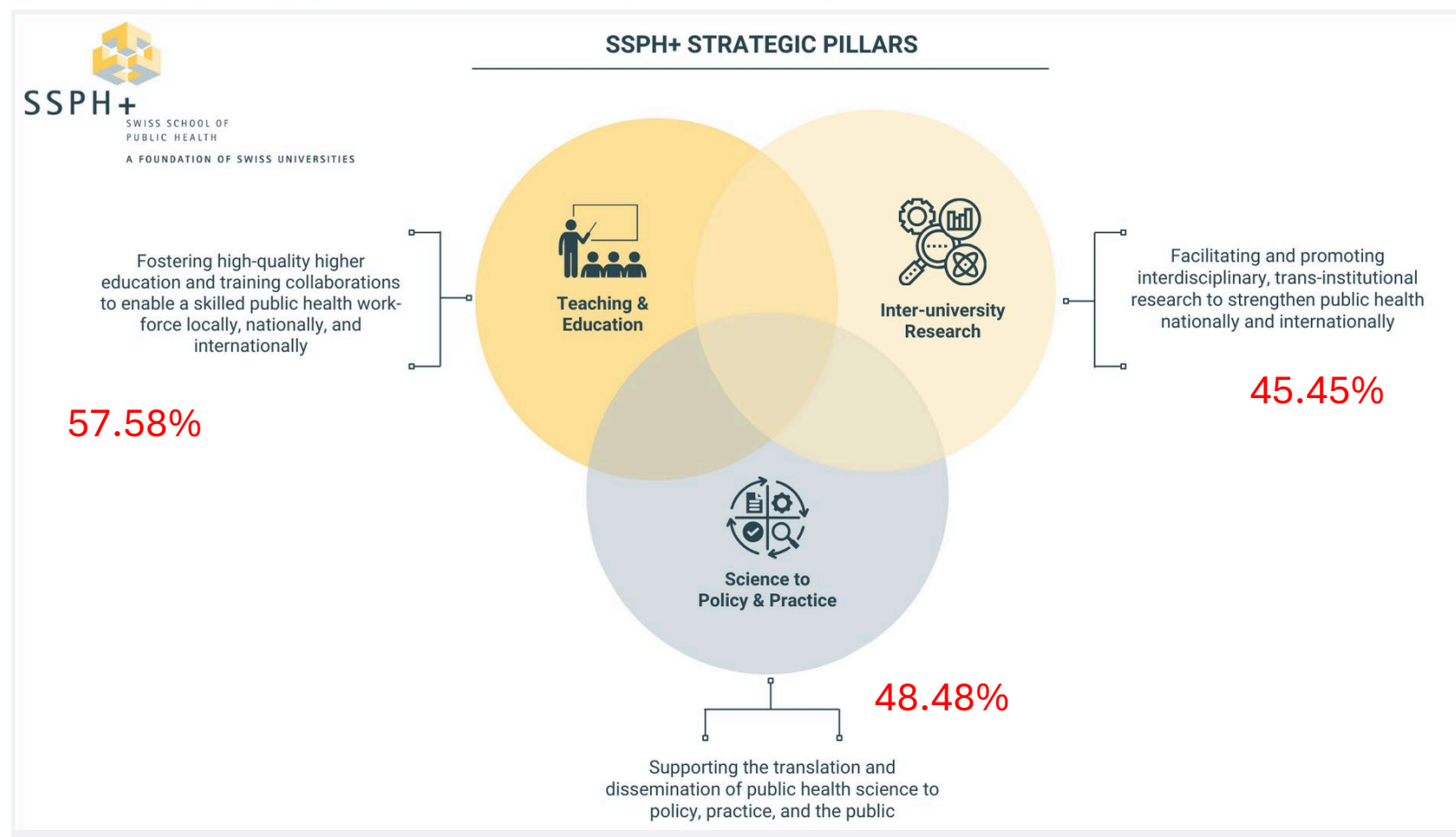
SSPH+

SWISS SCHOOL OF
PUBLIC HEALTH

A FOUNDATION OF SWISS UNIVERSITIES

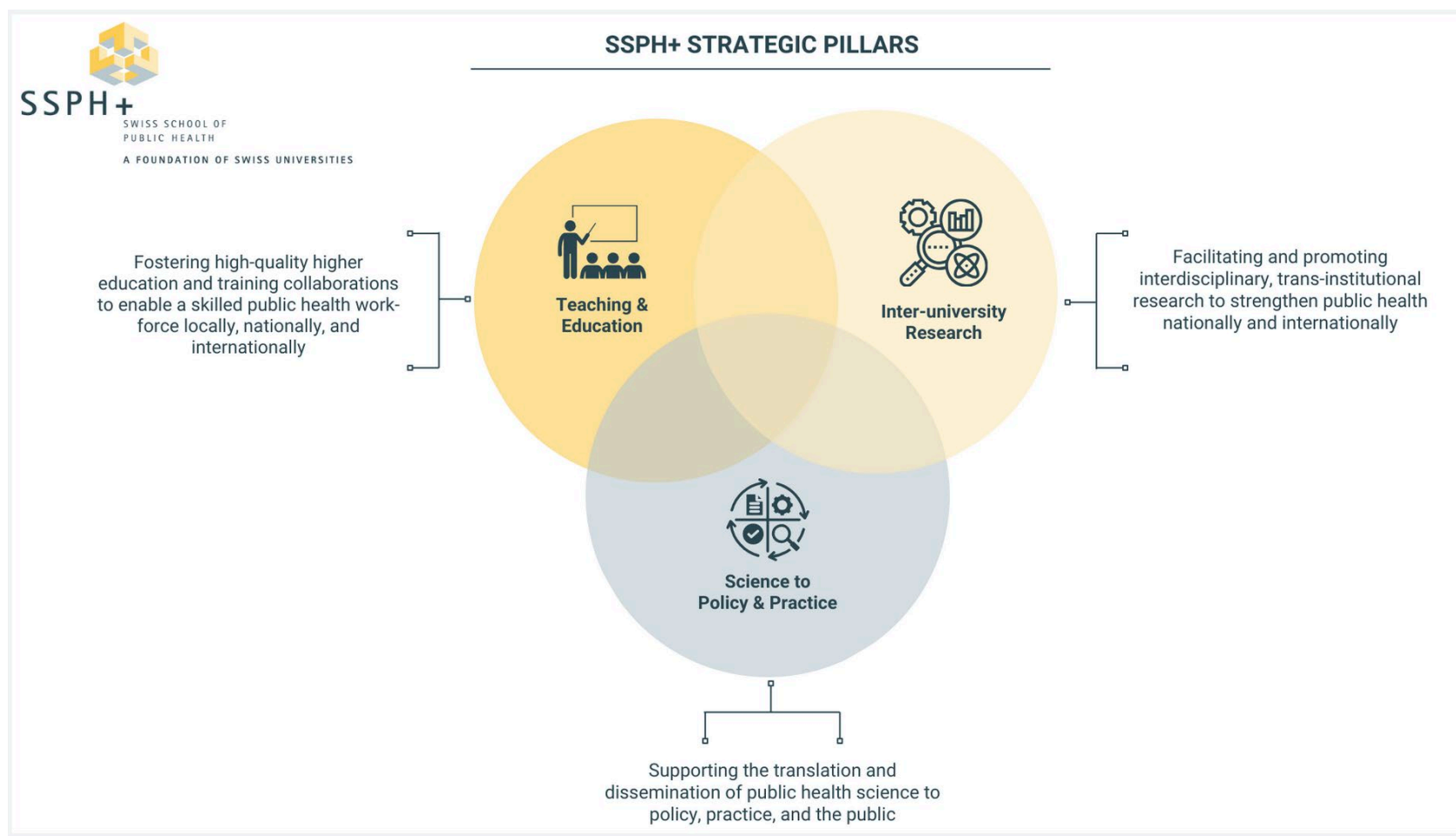
Next steps for SSPH+ ?

What should be the next big step for advancing planetary health in public health? If we want to move beyond statements and symbolism, what's the smartest next move to actually make planetary health part of how we work, teach, and lead?





Next steps for SSPH+?



Thanks for this dialogue!

Let's move forward



Special thanks to
- Ken Ritley and
Shakir Sultanov
of BFH for the
work on the
planetary
health app and
survey!

Triialogue Days

Planetary Health from Different Perspectives - **Mind the Gap**
Indian Institute of Science, Bengaluru | December 1 - 5, 2024



SSPH+

SWISS SCHOOL OF
PUBLIC HEALTH

A FOUNDATION OF SWISS UNIVERSITIES

Thank you !

Planetary Health Rap by Jon Chase (also on Spotify):
<https://www.youtube.com/watch?v=NUI6NYeBCzM>