

LCHE

LAUSANNE CENTER
FOR HEALTH ECONOMICS
BEHAVIOR, AND POLICY

Unil

UNIL | Université de Lausanne

unisanté

Centre universitaire de médecine générale
et santé publique • Lausanne

What is the LCHE?

**Unisanté, the Faculty of Biology and Medicine,
and the Faculty of Business and Economics come together**

Focal point for health economics
research, training, and policy advice at
UNIL

LCHE

LAUSANNE CENTER FOR HEALTH ECONOMICS,
BEHAVIOR, AND POLICY

Unil

UNIL | Université de Lausanne

HEC Lausanne

Faculté de biologie
et de médecine

unisanté

Centre universitaire de médecine générale
et santé publique • Lausanne

Opening Event on 26.10.2022, website launch: www.lche.ch



Unisanté**Armando Meier****Joachim Marti****Mauricio Avendano****HEC****Jürgen Maurer****Sonja Vogt****Dominic Rohner**

Health economics,
health policy, ageing
and survey research

Jürgen Maurer**Sonja Vogt**

Behavioral economics,
development
economics, social
tipping, large-scale
behavioral change

Dominic Rohner

Determinants and
consequences of
conflict, vaccine
hesitancy, impacts of
COVID-19 lockdowns,
sustainability

Behavioral economics,
vaccination uptake,
pandemic behavior,
labor economics

Armando Meier**Joachim Marti**

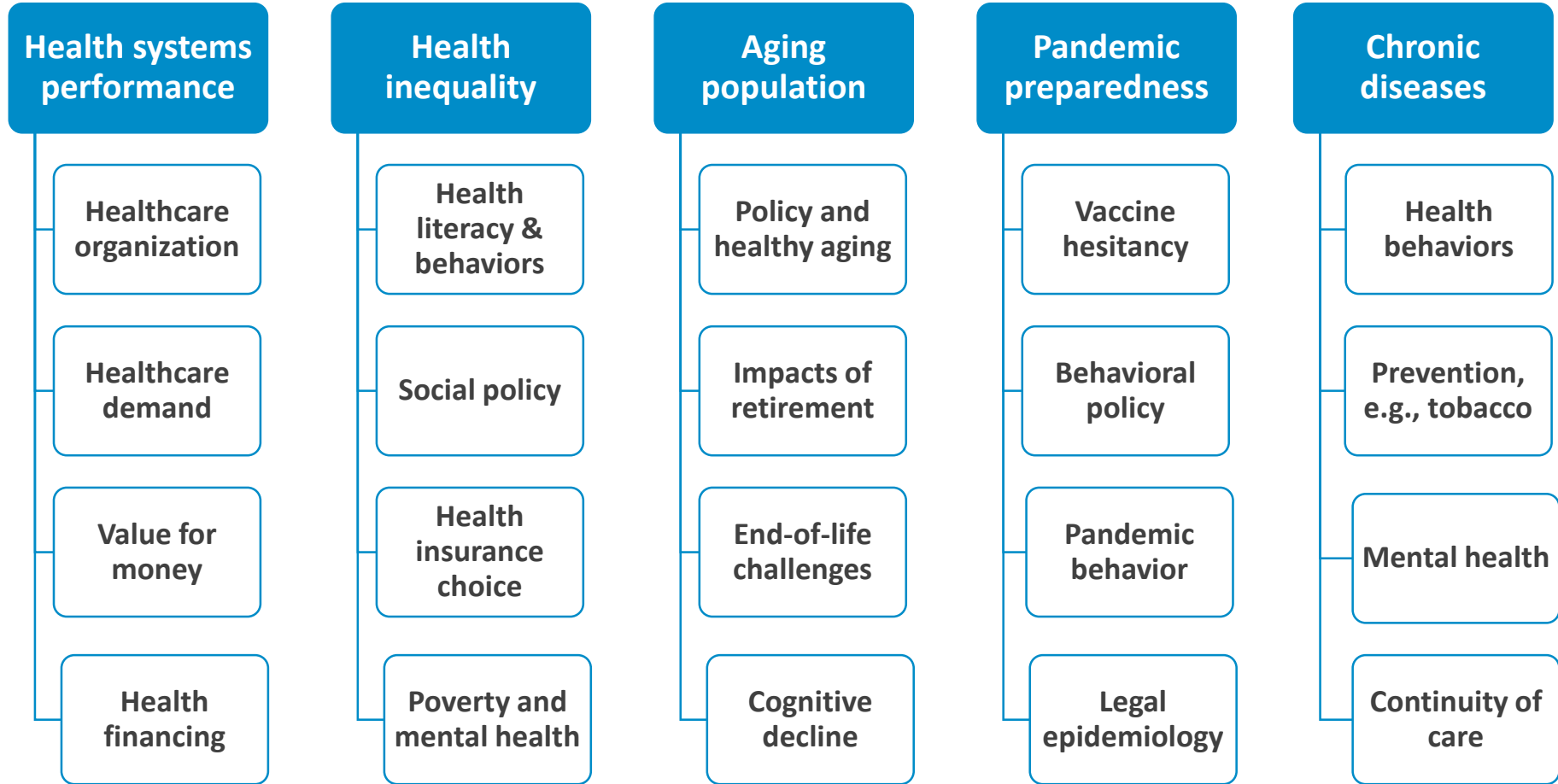
Economic evaluation,
health equity, health
financing, empirical
policy evaluation, low-
value care

Mauricio Avendano

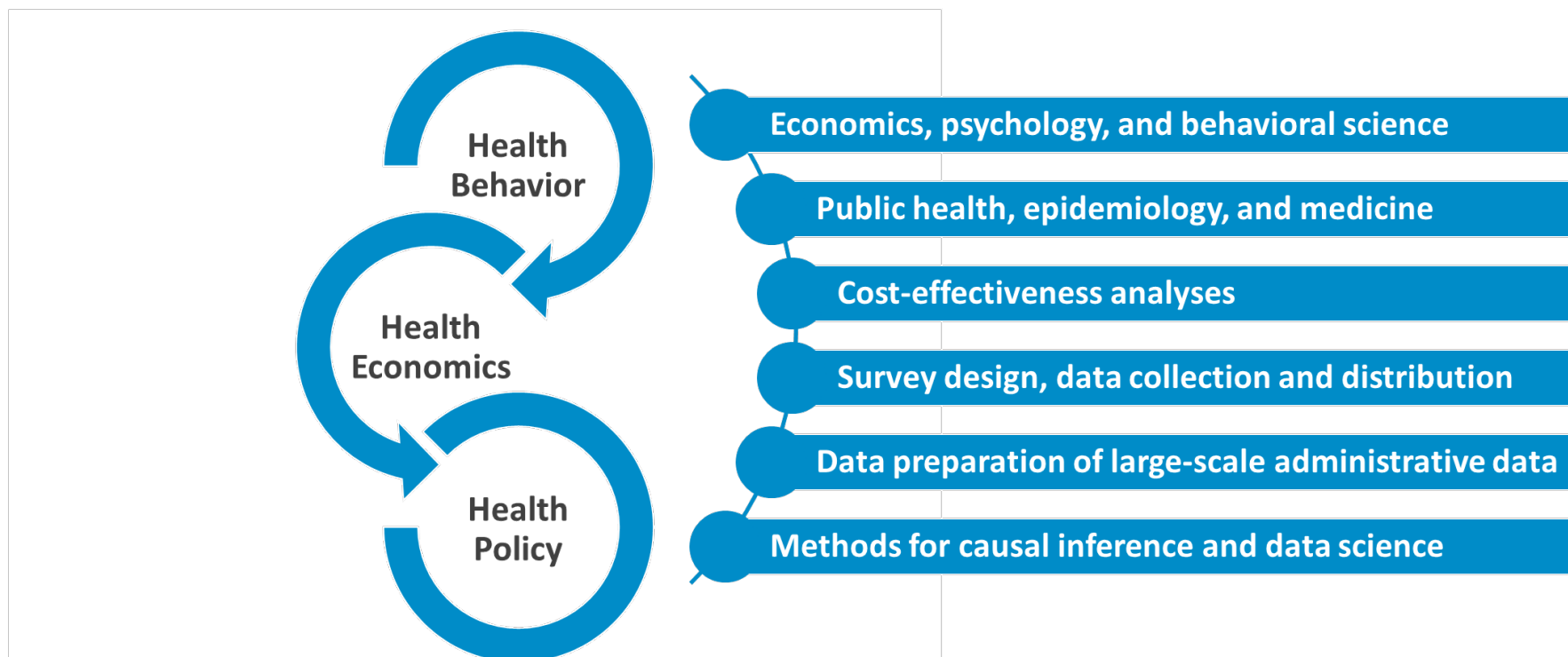
Inequalities,
public policy,
ageing, mental
health,
education



We work on key challenges facing healthcare systems globally:



Research approaches: we use a quantitative social science approach to health and health care



Now and in the future

Research, teaching, and policy advice

Ongoing projects, a few examples

- The impact of **historical education policies on cognitive function** and dementia: Expanding the Gateway to Global Ageing Research Infrastructure, US National Institute of Health, 2022-2024
- The impact of **Covid-19 policies on adult well-being**, FNS (NRP80), 2023-2026
- **Strengthening mental health and human capital** in a social programme for vulnerable young people in Colombia, FNS, 2023-2026
- The **health and economic consequences of low-value mental health care**: the case of benzodiazepines, FNS, 2022-2026
- **Swiss component** study of the Survey of Health, Ageing and Retirement in Europe (**SHARE**), FNS, 2020-2024 (joint with FORS)
- Healthy ageing in the face of death: **End-of-life issues and advance care planning in Switzerland**, FNS, 2020-2023; 2024-2026

Ongoing teaching, a few examples

- SSPH+ PhD course, “Introduction to Health Economics”, Second Edition Oct. 30 to Nov. 3 2023, SGGÖ & SSPH+
- EMBA with a focus on Healthcare Management, “Health Economics and Policy”, fall semesters, HEC
- PhD course “Health Equity in Chaotic times: Old Realities, New Challenges”, summer course, UNIL
- Master thesis supervision, research internships

Ongoing academic exchange, a few examples

- “Meeting Needs for Non-Communicable Disease Healthcare in LMICs”, Oct. 27 and 28, 2022
- Multidisciplinary workshop on “End-of-life care planning”, Spring 2023
- NIH workshop on education policies and cognition, Dublin, 21 August 2023
- SSPH+ Inter-university workshop on “Incentives for Health Behavior Change”, Fall 2023
- Health economics seminar series, annual health economics event

Evolution of the interdisciplinary LCHE

- We are open to collaborations and proposals to develop the LCHE!
 - Reach out to us at info@lche.ch
 - Find the latest news on www.lche.ch
- Sign-up to our Newsletter via info@lche.ch

→ **Thanks to all those who already reached out and to those who will!**

LCHE

LAUSANNE CENTER
FOR HEALTH ECONOMICS
BEHAVIOR, AND POLICY

Unil

UNIL | Université de Lausanne

unisanté

Centre universitaire de médecine générale
et santé publique • Lausanne