

SSPH+ Strategy 2023-2027: Moving Health Forward

Background

This Strategy 2023-2027 is the outcome of an 18-month participatory and interactive process of the SSPH+ Faculty members, Fellows and PhD students coordinated by the Directorate and steered by the SSPH+ Foundation Board. The process included workshops, online surveys, consultations, SWOT (strengths, weaknesses, opportunities and threats) and stakeholder analyses and an assessment of the SSPH+ environment and is the basis for the future work and development of SSPH+.

Where do we start

SSPH+ assembles an exceptionally broad range of competencies and expertise in research, teaching, training, and services covering most of the relevant domains of public health sciences in Switzerland. The value of what SSPH+ has to offer has never been more evident. Specifically, as the pandemic demonstrated the need for a stronger link between science and policy in Switzerland, the national academic network of SSPH+ proved valuable in its key role in connecting public health sciences with the needs of authorities and decision makers.

Where do we want to go – Vision, Mission, Motivation and Values

Our **Vision** is to promote equitable health through higher education, research, and knowledge transfer.

We focus our **Mission** on three strategic pillars:

1. **Teaching & Education:** SSPH+ fosters high-quality higher education and training collaborations to enable a skilled public health workforce locally, nationally, and internationally.
2. **Inter-university Research:** SSPH+ facilitates and promotes interdisciplinary, trans-institutional research to strengthen public health nationally and internationally.
3. **Science to Policy & Practice:** SSPH+ supports the translation and dissemination of public health science to policy, practice, and the public.

Our core **Motivation** is to foster higher education and research. We empower our public health community and our faculty of dedicated public health experts and scientists to become stronger and broader in Switzerland and abroad. We facilitate inter-university collaborations which provide us an added value in terms of scientific exchange and lifelong learning. We contribute to the health of the population and improve general knowledge about health through our extended network, thus interacting as an intermediary between science and the public. We share our knowledge of public health with students, practitioners, politicians, the media, the economy, and the public.

The following **Values** guide our actions:

Community of Will and Collaboration

What unifies and holds us together is the will and the goal to improve the health of the population based on science, evidence, and communication. We feel part of a larger whole and are eagerly committed to public health, working together to address the challenges of the twenty-first century and to give public health a strong voice in Switzerland. We collaborate across universities and learn from each other.

Diversity, Transdisciplinarity, Respect, Responsibility

We value and promote diversity, inclusiveness, transdisciplinarity, and the collective in our education, research, and service. We maintain fair, respectful interactions and a positive work

atmosphere both in collaborations and academic competitions. We communicate transparently and support each other.

Community, Scientific Exchange, Lifelong Learning

We form a community and at the same time a knowledge hub that offers its members added value in the form of scientific exchange in the academic network and lifelong learning in public health. In addition, we coordinate those issues for our network that affect everyone: education, scientific programs, communication, legal, lobbying, fundraising and more.

How do we get to our destination?

As an inter-university faculty and academic network, SSPH+ adheres to the following guiding principles:

- SSPH+ will remain a reliable, agile, lean, and mostly virtual network organization, capitalizing on digital approaches.
- The SSPH+ Foundation universities fund the basic core functions through an annual contribution to the core budget based on a transparent and fair financial concept, whereas the SSPH+ Directorate's Office engages in the acquisition of additional funds.
- SSPH+ will engage in transparent communication and lean, reliable, and predictable management to fulfil its mission.
- SSPH+ supports partner institutions to facilitate inter-university national and international collaborations beyond the core activities while following the principle of subsidiarity. It does not compete with its partner institutions in actions or in raising funds but seeks to leverage its national network to implement complementary, synergistic, and collaborative strategies.
- SSPH+ faculty and its Directorate's Office set priorities, approved by the Foundation Board, based on agreed upon criteria to adjust the intended outcomes to the available resources.
- The Foundation Board defines and approves the annual activities and budgets and follows-up its execution.

See the SSPH+ strategic actions and outcomes of the next funding period [here](#).

With what organization?

The organization of SSPH+ facilitates the addition of new affairs, programs or projects with their own needs-based governance and organizational structure, assembled under the SSPH+ umbrella, with their own organizational governance, advisory board, and range of program partners. See organization of SSPH+ displayed as an organigram in figure 1 below.

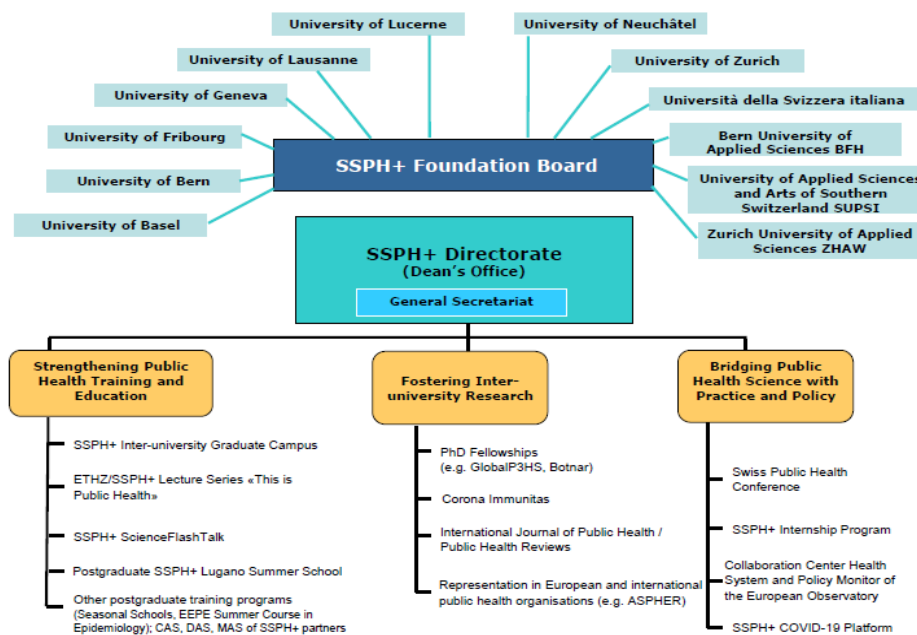


Fig. 1. Organigram of SSPH+*

*) as of Feb 2022- will be replaced in Nov 2022 by the final partner universities in 2023.